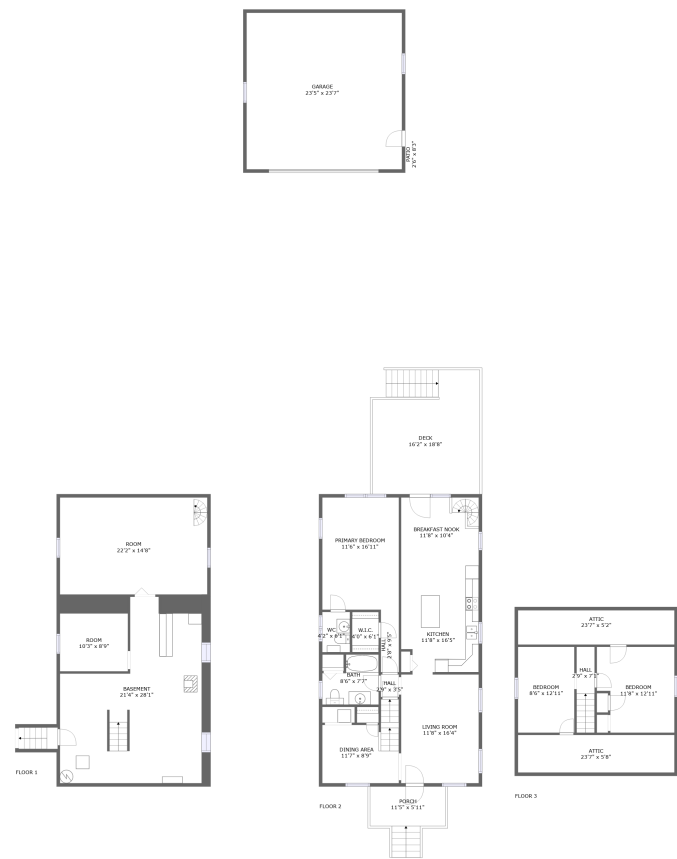


Home report

76 Susquehanna Avenue, Tunkhannock, Wyoming County,
Pennsylvania, United States, 18657



Total Area: 1679 sq. ft

Below Ground: 472 sq. ft, Floor 2: 1017 sq. ft, Floor 3: 190 sq. ft

Excluded: Basement 463 sq. ft, Undefined 19 sq. ft, Garage 553 sq. ft, Porch 88 sq. ft, Deck 291 sq. ft, Patio 20 sq. ft, Low ceiling 388 sq. ft, Walls: 261 sq. ft

Property summary

**3**
Floors

**3**
Bedrooms

**1**
Bathrooms

Home report

**76 Susquehanna Avenue, Tunkhannock, Wyoming County,
Pennsylvania, United States, 18657**



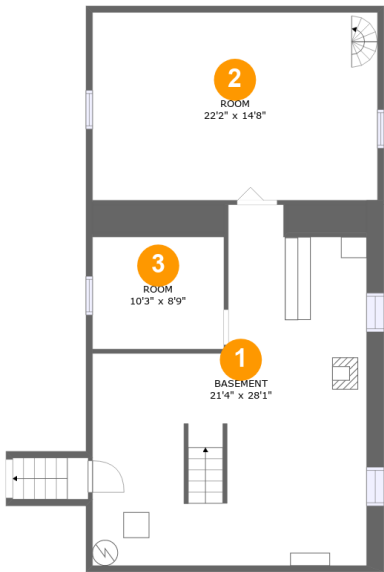
1
Half baths



1
Garages

Home report

76 Susquehanna Avenue, Tunkhannock, Wyoming County,
Pennsylvania, United States, 18657



Room dimensions

Floor 1 Below ground Total:472sqft Excluded: 482sqft

#		Max Dimensions	sqft	Included
1	Basement	21'4" x 28'1"	462 sq. ft	No
2	Room	22'2" x 14'8"	325 sq. ft	Yes
3	Room	10'3" x 8'9"	90 sq. ft	Yes

Home report

76 Susquehanna Avenue, Tunkhannock, Wyoming County,
Pennsylvania, United States, 18657



Room dimensions

Floor 2Total:1017sqft Excluded: 952sqft

#		Max Dimensions	sqft	Included
4	Porch	11'5" x 5'11"	88 sq. ft	No
5	Patio	2'6" x 8'3"	20 sq. ft	No
6	Primary Bedroom	11'6" x 16'11"	196 sq. ft	Yes
7	Breakfast Nook	11'8" x 10'4"	121 sq. ft	Yes
8	Garage	23'5" x 23'7"	553 sq. ft	No
9	Bath	8'6" x 7'7"	54 sq. ft	Yes
10	Hall	2'8" x 9'5"	26 sq. ft	Yes
11	WC	4'2" x 6'1"	25 sq. ft	Yes
12	W.I.C.	4'0" x 6'1"	24 sq. ft	Yes
13	Hall	2'9" x 3'5"	9 sq. ft	Yes
14	Dining Area	11'7" x 8'9"	112 sq. ft	Yes

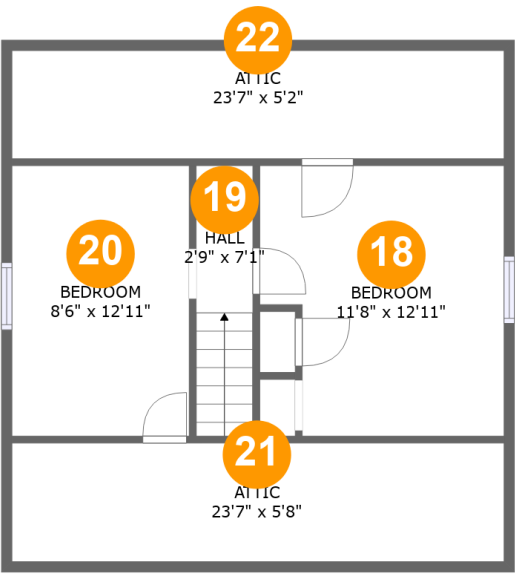
Home report

76 Susquehanna Avenue, Tunkhannock, Wyoming County,
Pennsylvania, United States, 18657

#		Max Dimensions	sqft	Included
15	Deck	16'2" x 18'8"	291 sq. ft	No
16	Kitchen	11'8" x 16'5"	183 sq. ft	Yes
17	Living Room	11'8" x 16'4"	192 sq. ft	Yes

Home report

76 Susquehanna Avenue, Tunkhannock, Wyoming County,
Pennsylvania, United States, 18657

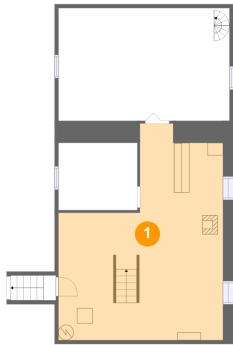


Room dimensions

Floor 3 Total:190sqft Excluded: 388sqft

#		Max Dimensions	sqft	Included
18	Bedroom	11'8" x 12'11"	82 sq. ft	Yes
19	Hall	2'9" x 7'1"	28 sq. ft	Yes
20	Bedroom	8'6" x 12'11"	65 sq. ft	Yes
21	Attic	23'7" x 5'8"	134 sq. ft	No
22	Attic	23'7" x 5'2"	122 sq. ft	No

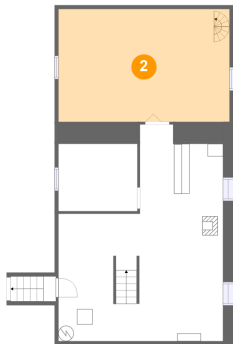
1 Floor 1 - Basement



Max Dimensions: 21'4" x 28'1"
Calculated Area: 462 sq. ft
Included: No

Heated: Yes
Finished: No
Enclosed: Yes
Contiguous: Yes
Permitted: Yes
Wet space: No
Addition: No
Conversion: No

2 Floor 1 - Room

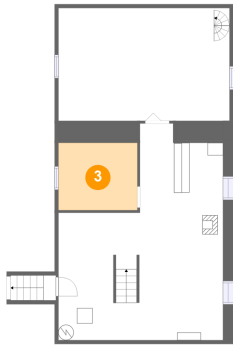


Max Dimensions: 22'2" x 14'8"
Calculated Area: 325 sq. ft
Included: No

Heated: Yes
Finished: Yes
Enclosed: Yes
Contiguous: No
Permitted: Yes
Wet space: No
Addition: No
Conversion: No

76 Susquehanna Avenue, Tunkhannock, Wyoming County,
Pennsylvania, United States, 18657

3 Floor 1 - Room



Max Dimensions: 10'3" x 8'9"
Calculated Area: 90 sq. ft
Included: No

Heated: Yes
Finished: Yes
Enclosed: Yes
Contiguous: No
Permitted: Yes
Wet space: No
Addition: No
Conversion: No

4 Floor 2 - Porch



Max Dimensions: 11'5" x 5'11"
Calculated Area: 88 sq. ft
Included: No

Heated: No
Finished: Yes
Enclosed: No
Contiguous: Yes
Permitted: Yes
Wet space: No
Addition: No
Conversion: No

5 Floor 2 - Patio



Max Dimensions: 2'6" x 8'3"
Calculated Area: 20 sq. ft
Included: No

Heated: No
Finished: Yes
Enclosed: No
Contiguous: Yes
Permitted: Yes
Wet space: No
Addition: No
Conversion: No

76 Susquehanna Avenue, Tunkhannock, Wyoming County,
Pennsylvania, United States, 18657

6 Floor 2 - Primary Bedroom



Max Dimensions: 11'6" x 16'11"
Calculated Area: 196 sq. ft
Included: Yes

Heated: Yes
Finished: Yes
Enclosed: Yes
Contiguous: Yes
Permitted: Yes
Wet space: No
Addition: No
Conversion: No

7 Floor 2 - Breakfast Nook



Max Dimensions: 11'8" x 10'4"
Calculated Area: 121 sq. ft
Included: Yes

Heated: Yes
Finished: Yes
Enclosed: Yes
Contiguous: Yes
Permitted: Yes
Wet space: No
Addition: No
Conversion: No

8 Floor 2 - Garage



Max Dimensions: 23'5" x 23'7"
Calculated Area: 553 sq. ft
Included: No

Heated: No
Finished: No
Enclosed: Yes
Contiguous: Yes
Permitted: Yes
Wet space: No
Addition: No
Conversion: No

76 Susquehanna Avenue, Tunkhannock, Wyoming County,
Pennsylvania, United States, 18657

9 Floor 2 - Bath



Max Dimensions: 8'6" x 7'7"
Calculated Area: 54 sq. ft
Included: Yes

Heated: Yes
Finished: Yes
Enclosed: Yes
Contiguous: Yes
Permitted: Yes
Wet space: Yes
Addition: No
Conversion: No

10 Floor 2 - Hall



Max Dimensions: 2'8" x 9'5"
Calculated Area: 26 sq. ft
Included: Yes

Heated: Yes
Finished: Yes
Enclosed: Yes
Contiguous: Yes
Permitted: Yes
Wet space: No
Addition: No
Conversion: No

11 Floor 2 - WC



Max Dimensions: 4'2" x 6'1"
Calculated Area: 25 sq. ft
Included: Yes

Heated: Yes
Finished: Yes
Enclosed: Yes
Contiguous: Yes
Permitted: Yes
Wet space: Yes
Addition: No
Conversion: No

76 Susquehanna Avenue, Tunkhannock, Wyoming County,
Pennsylvania, United States, 18657

12 Floor 2 - W.I.C.



Max Dimensions: 4'0" x 6'1"
Calculated Area: 24 sq. ft
Included: Yes

Heated: Yes
Finished: Yes
Enclosed: Yes
Contiguous: Yes
Permitted: Yes
Wet space: No
Addition: No
Conversion: No



13 Floor 2 - Hall



Max Dimensions: 2'9" x 3'5"
Calculated Area: 9 sq. ft
Included: Yes

Heated: Yes
Finished: Yes
Enclosed: Yes
Contiguous: Yes
Permitted: Yes
Wet space: No
Addition: No
Conversion: No



14 Floor 2 - Dining Area



Max Dimensions: 11'7" x 8'9"
Calculated Area: 112 sq. ft
Included: Yes

Heated: Yes
Finished: Yes
Enclosed: Yes
Contiguous: Yes
Permitted: Yes
Wet space: No
Addition: No
Conversion: No



76 Susquehanna Avenue, Tunkhannock, Wyoming County,
Pennsylvania, United States, 18657

15 Floor 2 - Deck



Max Dimensions: 16'2" x 18'8"
Calculated Area: 291 sq. ft
Included: No

Heated: No
Finished: Yes
Enclosed: No
Contiguous: Yes
Permitted: Yes
Wet space: No
Addition: No
Conversion: No

16 Floor 2 - Kitchen



Max Dimensions: 11'8" x 16'5"
Calculated Area: 183 sq. ft
Included: Yes

Heated: Yes
Finished: Yes
Enclosed: Yes
Contiguous: Yes
Permitted: Yes
Wet space: No
Addition: No
Conversion: No

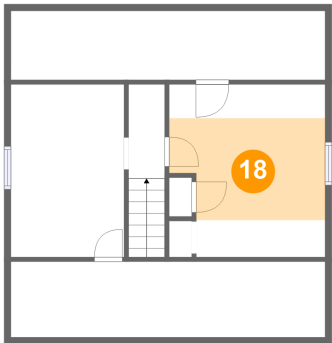
17 Floor 2 - Living Room



Max Dimensions: 11'8" x 16'4"
Calculated Area: 192 sq. ft
Included: Yes

Heated: Yes
Finished: Yes
Enclosed: Yes
Contiguous: Yes
Permitted: Yes
Wet space: No
Addition: No
Conversion: No

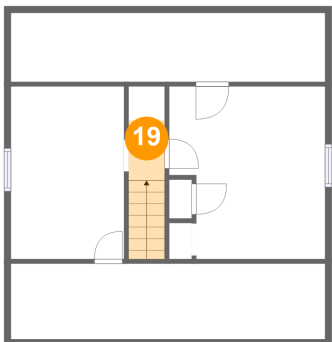
18 Floor 3 - Bedroom



Max Dimensions: 11'8" x 12'11"
Calculated Area: 82 sq. ft
Included: Yes

Heated: Yes
Finished: Yes
Enclosed: Yes
Contiguous: Yes
Permitted: Yes
Wet space: No
Addition: No
Conversion: No

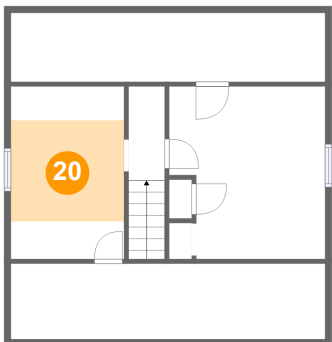
19 Floor 3 - Hall



Max Dimensions: 2'9" x 7'1"
Calculated Area: 28 sq. ft
Included: Yes

Heated: Yes
Finished: Yes
Enclosed: Yes
Contiguous: Yes
Permitted: Yes
Wet space: No
Addition: No
Conversion: No

20 Floor 3 - Bedroom

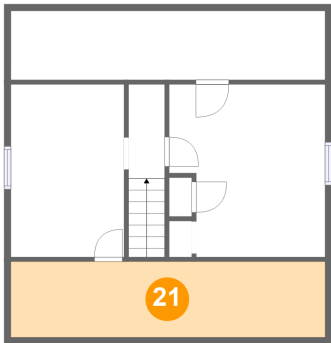


Max Dimensions: 8'6" x 12'11"
Calculated Area: 65 sq. ft
Included: Yes

Heated: Yes
Finished: Yes
Enclosed: Yes
Contiguous: Yes
Permitted: Yes
Wet space: No
Addition: No
Conversion: No

76 Susquehanna Avenue, Tunkhannock, Wyoming County,
Pennsylvania, United States, 18657

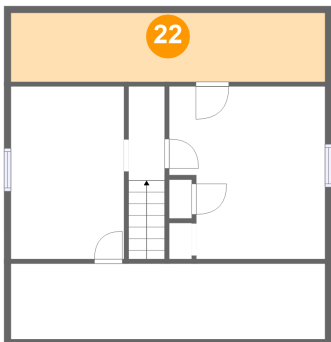
21 Floor 3 - Attic



Max Dimensions: 23'7" x 5'8"
Calculated Area: 134 sq. ft
Included: No

Heated: No
Finished: No
Enclosed: Yes
Contiguous: Yes
Permitted: Yes
Wet space: No
Addition: No
Conversion: No

22 Floor 3 - Attic



Max Dimensions: 23'7" x 5'2"
Calculated Area: 122 sq. ft
Included: No

Heated: No
Finished: No
Enclosed: Yes
Contiguous: Yes
Permitted: Yes
Wet space: No
Addition: No
Conversion: No